

# LAND FOR SALE



**Location:** 1 1/2 miles south of the Potter, Nebraska I-80 Interchange.

**Legal Description:** W1/2 Section 18-T14N-R52W of the 6th P.M., Cheyenne County, Nebraska.

**Acres:** 316.66 Tax Assessed Acres

**Taxes:** 2012 taxes payable in 2013: \$1,395.94

**Land Use:** This property is non-irrigated cropland presently in CRP. There are approximately 27 Acres Pasture.

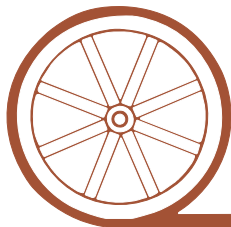
**FSA Info:** 283.56 Acres Cropland presently in CRP through 2020. Annual CRP Payment is \$10,082.00

**Price:** \$170,000.00

**Comments:** This property has excellent access with county gravel roads on the east and south sides of the property.

**Contact:** **Mike Polk; Listing Agent - 308-539-4446 or [mike@agriaffiliates.com](mailto:mike@agriaffiliates.com) or Roger Leuhrs - 308-631-2506 or [roger@agriaffiliates.com](mailto:roger@agriaffiliates.com)**  
Jerry Weaver, Bruce Dodson, Loren Johnson, Chase Dodson, Greg Polk, Tony Eggleston or Don Walker

*Offered Exclusively By:*



## AGRI AFFILIATES, INC.

*...Providing Farm - Ranch Real Estate Services...*

**NORTH PLATTE OFFICE**

P.O. Box 1166

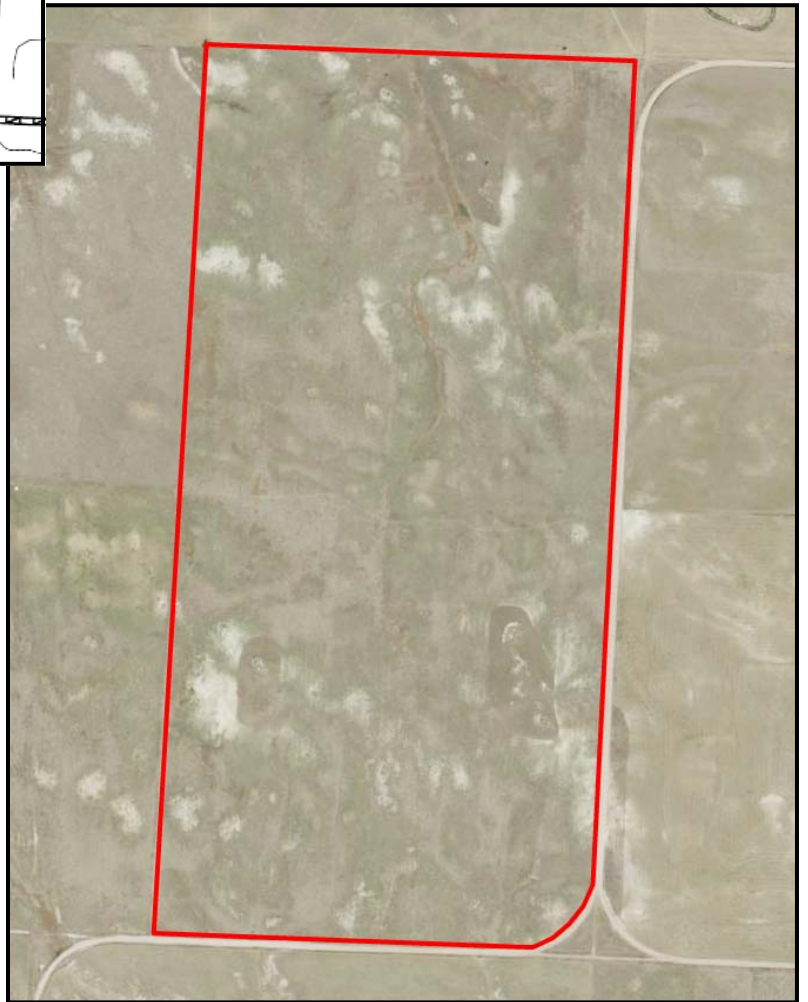
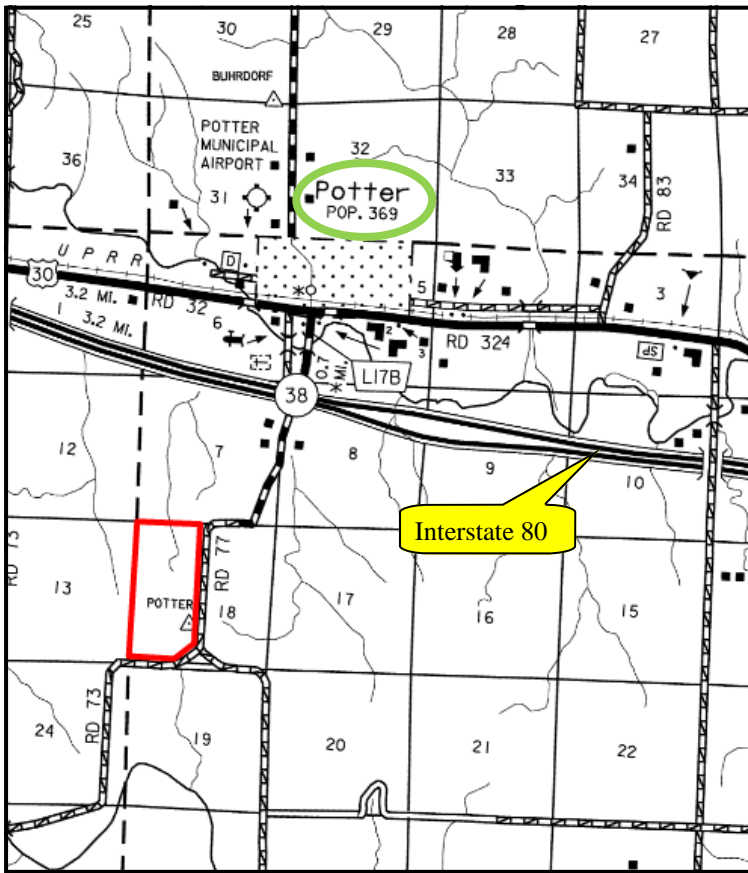
I-80 & US Hwy 83

North Platte, NE 69103

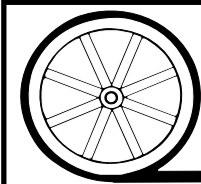
[www.agriaffiliates.com](http://www.agriaffiliates.com)

**(308) 534-9240**

Information contained herein was obtained from sources deemed reliable. We have no reason to doubt the accuracy, but we do not guarantee it. Prospective Buyers should verify all information, including items of income and expense. All maps provided by Agri Affiliates, Inc. are approximations only, to be used as a general guideline, and not intended as survey accurate.



All maps provided by Agri Affiliates, Inc. are approximations only, to be used as a general guideline, and not intended as survey accurate.



**AGRI AFFILIATES, INC.**

*...Providing Farm - Ranch Real Estate Services...*