

LAND FOR SALE

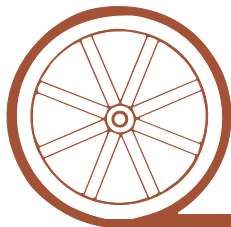
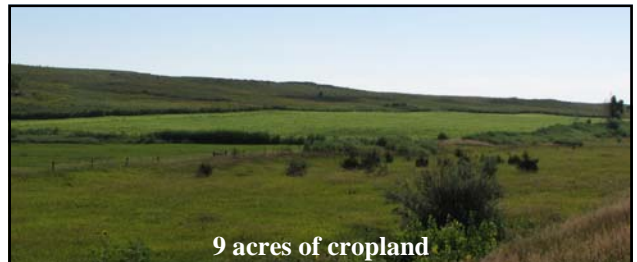
Clear Creek Pasture

SOLD

View our Current Listings

[HERE!](#)

- Location:** 6 miles east of Lewellen, Nebraska on south side of Highway 92.
- Legal Description:** N1/2 Section 33-T16N-R41W of the 6th PM, Keith County, Nebraska, excluding tracts.
- Acres:** Approximately 242 acres
- Taxes:** 2012 taxes payable in 2013 - Approximately \$484.00
- Land Use:** This property is primarily used for livestock grazing with additional benefit of deer and turkey hunting. There are 9 acres of cropland presently planted to forage sorghum.
- Water:** There is presently one windmill with two stock tanks centrally located.
- Price:** **\$168,000**
- Comments:** This is a nice piece of grass with some spectacular views of the North Platte River Valley. It sets just north of the Clear Creek Controlled Hunting Area, which affords excellent duck and goose hunting along with abundant deer and turkey.
- Contact:** **Mike Polk; Listing Agent - 308-539-4446 or mike@agriaffiliates.com**
Bruce Dodson, Loren Johnson, Tony Eggleston, Jerry Weaver, Roger, Luehrs, Chase Dodson or Greg Polk



Offered Exclusively By:

AGRI AFFILIATES, INC.

...Providing Farm - Ranch Real Estate Services...

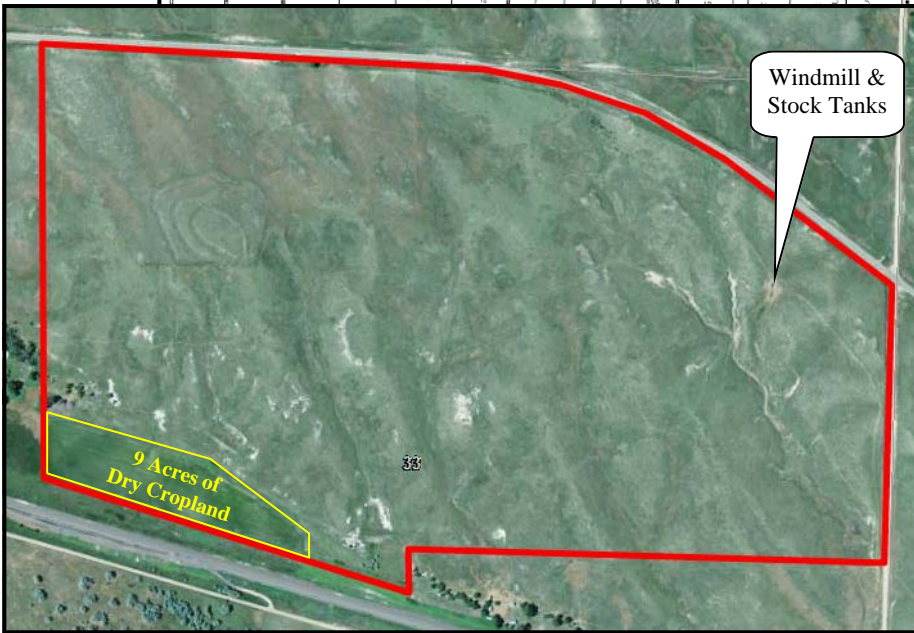
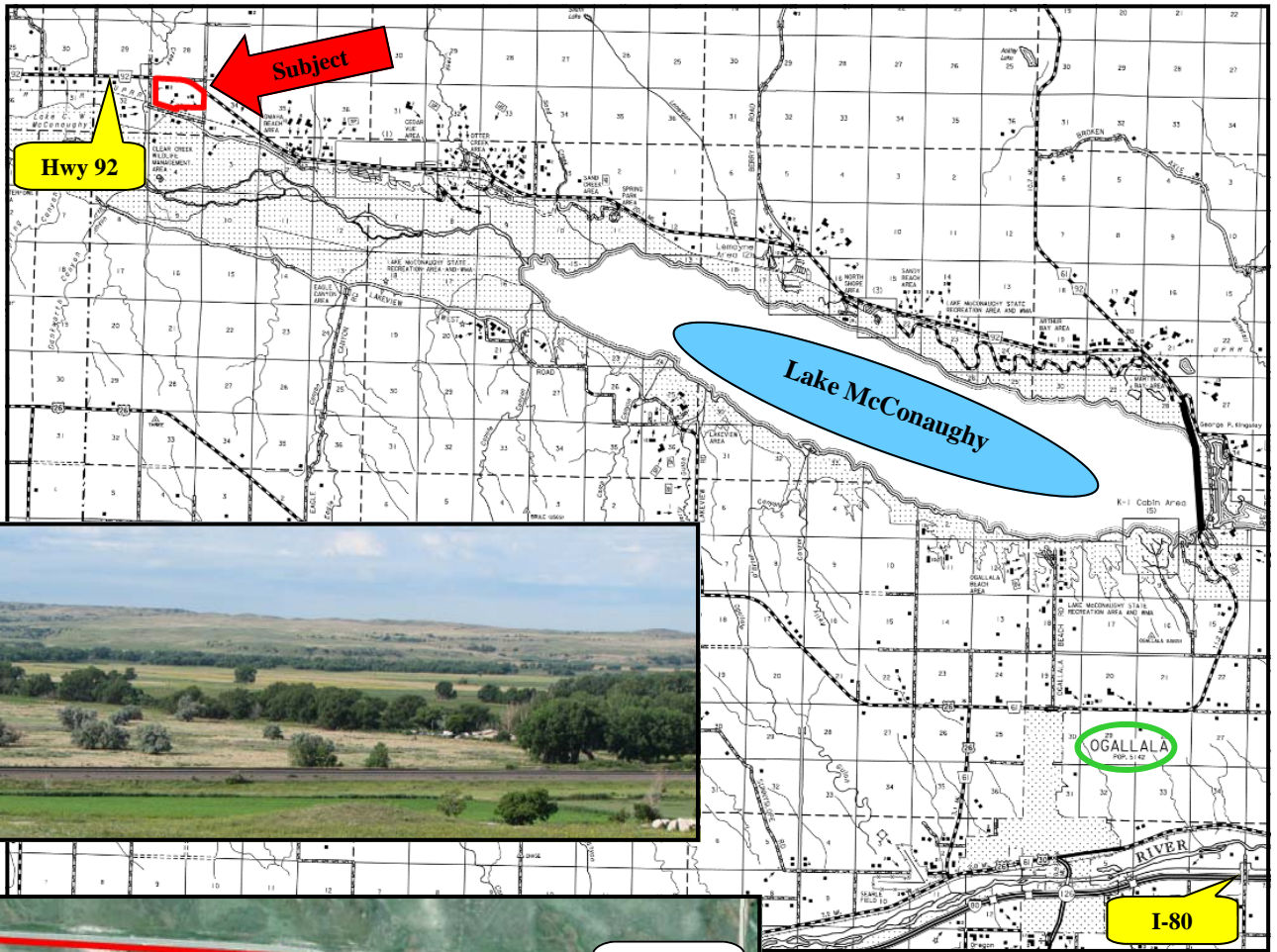
NORTH PLATTE OFFICE
P.O. Box 1166
I-80 & US Hwy 83
North Platte, NE 69103
www.agriaffiliates.com

(308) 534-9240

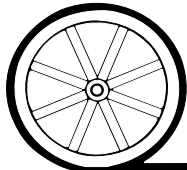
Fax (308) 534-9244



Information contained herein was obtained from sources deemed reliable. We have no reason to doubt the accuracy, but we do not guarantee it. Prospective Buyers should verify all information, including items of income and expense. All maps provided by Agri Affiliates, Inc. are approximations only, to be used as a general guideline, and not intended as survey accurate.



All maps provided by Agri Affiliates, Inc. are approximations only, to be used as a general guideline, and not intended as survey accurate.



AGRI AFFILIATES, INC.
...Providing Farm - Ranch Real Estate Services...