

LAND FOR SALE

HULL FARM



Location: 7 miles south and 2 miles east of Hastings, or 2 miles north and 6 1/2 miles east of Ayr, Nebraska. (Located on the corner of E Sundown Road and Pawnee Avenue)

Legal Description: W1/2 SW1/4 Section 23-T6N-R9W of the 6th P.M., Adams County, Nebraska

Acres: Adams County Assessor indicates a total of 80.0 acres

Land Use: Farm consists of pivot irrigated cropland with dry cropland corners

FSA: Total Cropland - 75.2 Corn base 67.6 acres at 119 bu/acre

Irrigation: Irrigation well and equipment information is as follows:

Well Registration	G-140361	Completion Date	5/2/2006
Gallons / Min	800 gpm	Well Depth	220'
Static Water Level	92'	Column	8.62"

Diesel Power unit, gearhead, pump, fuel tank, and pivot irrigation system are tenant owned and do not sell with the property.

NRD Information: The farm is located in the Little Blue Natural Resource District.

Soils: Soils consist of Crete, Hobbs, Hastings, and Holder silt loams, with 0-11% slope.

RE Taxes: 2013 real estate tax - \$3,115.74

List Price: **\$700,000.00** **Cash**

Comments: A well maintained, very productive farm located in a strong farming community.

Contact: **Kent Richter, Listing Agent** **(308) 627-6465 kent@agriaffiliates.com**
Bart Woodward, Broker (308) 233-4605 bart@agriaffiliates.com
Bryan Danburg, Sales Person (308) 380-3488 bryan@agriaffiliates.com
David J. Frost, Assoc. Broker (308) 380-8321 davef@agriaffiliates.com
Adam Pavelka, Sales Person (402) 984-7744 adam@agriaffiliates.com

Offered Exclusively By:



AGRI AFFILIATES, INC.

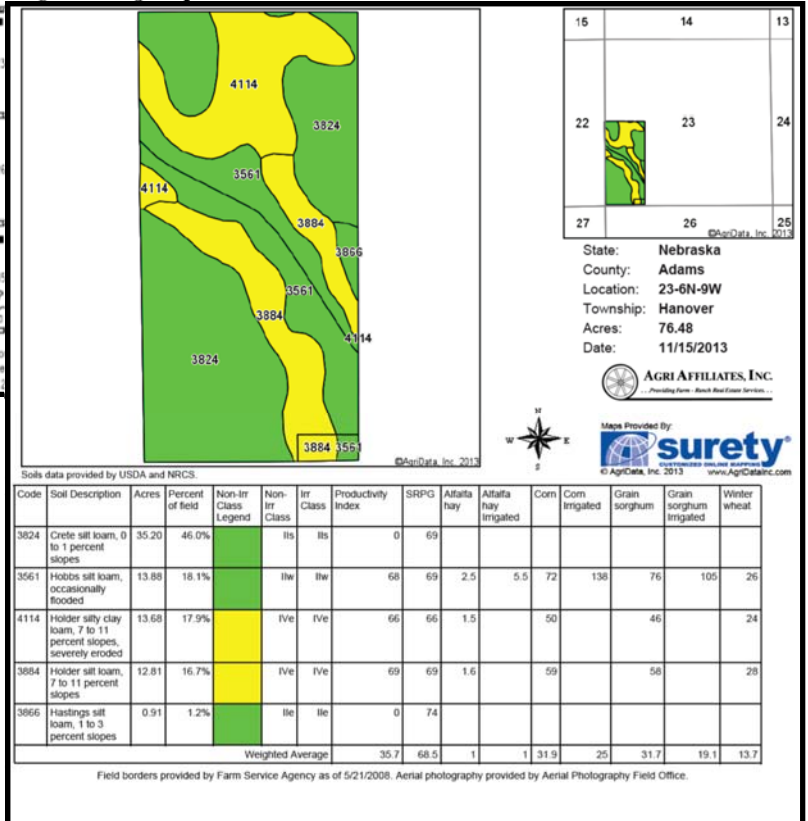
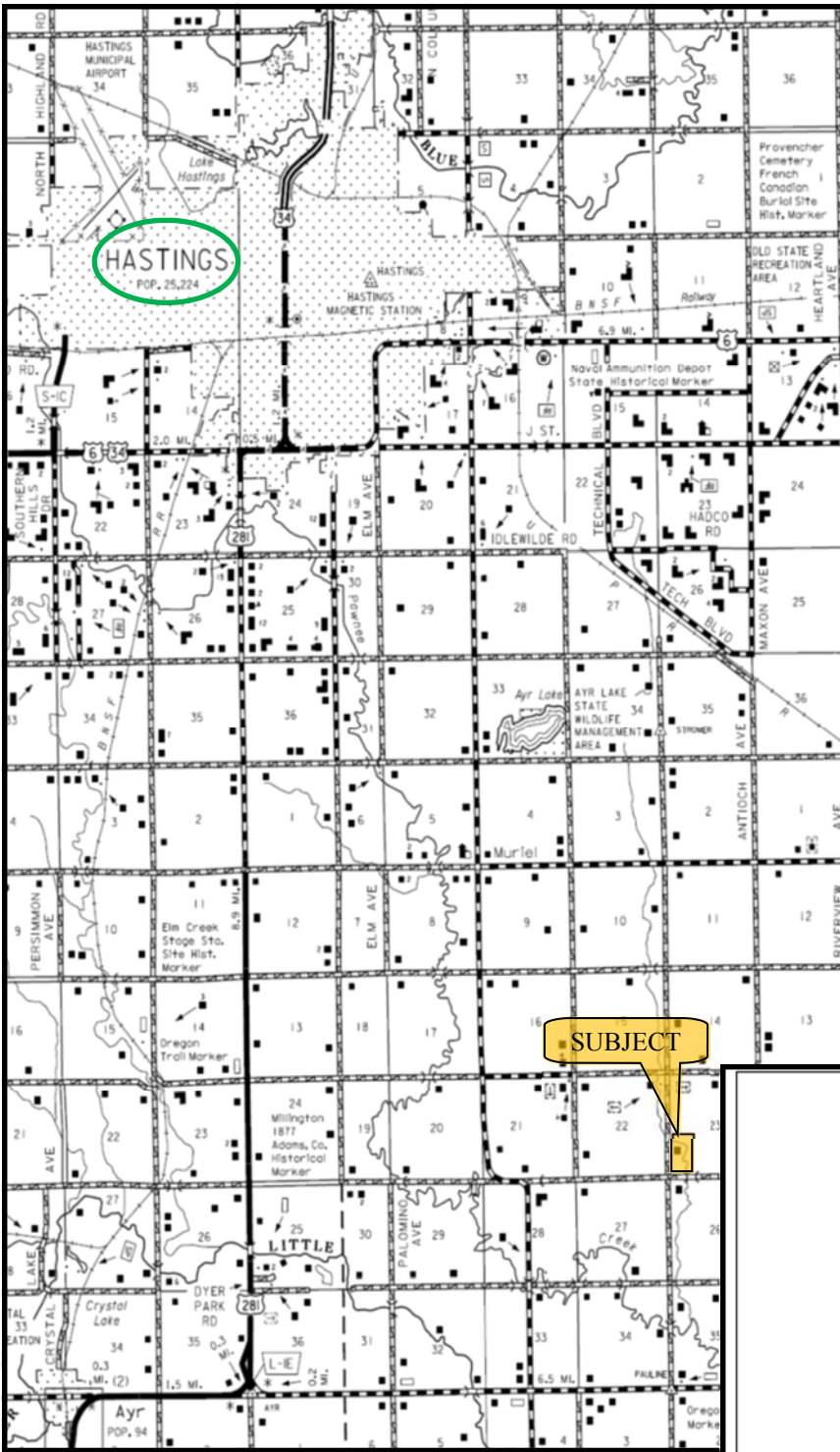
... Providing Farm - Ranch Real Estate Services. ...

KEARNEY OFFICE
P.O. Box 1390
2418 East Hwy 30
Kearney NE 68848-1390
www.agriaffiliates.com
(308) 234-4969
Fax (308) 236-9776

Management · Sales · Auctions · Appraisals

Information contained herein was obtained from sources deemed reliable. We have no reason to doubt the accuracy, but we do not guarantee it. Prospective Buyers should verify all information, including items of income and expenses. All maps provided by Agri Affiliates, Inc. are approximations only, to be used as a general guideline, and not intended as survey accurate.





www.agriaffiliates.com

All maps provided by Agri Affiliates, Inc. are approximations only, to be used as a general guideline, and not intended as survey accurate.