

LAND FOR SALE



SOLD

Jeffrey Lake
View our Current Listings
Rangeland
[HERE!](#)

Location:

From the Brady, Nebraska I-80 Interstate exchange: 3 miles south on Banner Road and then 2 miles southwest on Brady Moorefield Road.

Legal Description:

Part of E1/2 Section 4, Part of Section 9 lying west of the County Road in T11N-R27W of the 6th PM, Lincoln County.

Acres:

264.58 tax assessed acres

Taxes:

2011 taxes payable in 2012 - \$1,634.66

Land Use:

Rangeland and recreational use

Price:

\$450,000 (\$1,700/acre)

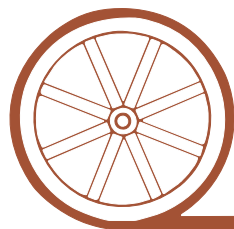
Comments:

Great property to build your new home, with rangeland and recreational uses. Property has recently been surveyed.

Contact:

Bruce Dodson - Listing Agent, 308-539-4455 or email: bruce@agriaffiliates.com
Mike Polk, Loren Johnson, Jerry Weaver, Tony Eggleston

Offered Exclusively By:



AGRI AFFILIATES, INC.

...Providing Farm - Ranch Real Estate Services...

NORTH PLATTE OFFICE

P.O. Box 1166

I-80 & US Hwy 83

North Platte, NE 69103

www.agriaffiliates.com

(308) 534-9240

Telecopier (308) 534-9244

Information contained herein was obtained from sources deemed reliable. We have no reason to doubt the accuracy, but we do not guarantee it. Prospective Buyers should verify all information, including items of income and expense. All maps provided by Agri Affiliates, Inc. are approximations only, to be used as a general guideline, and not intended as survey accurate.



Canyon land with...



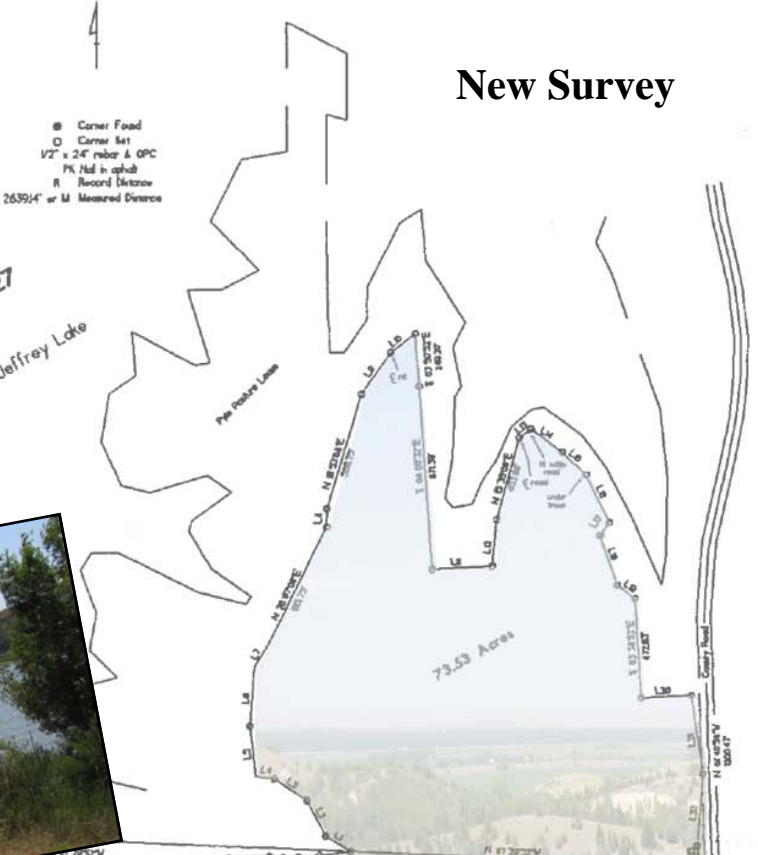
Scenic Views!



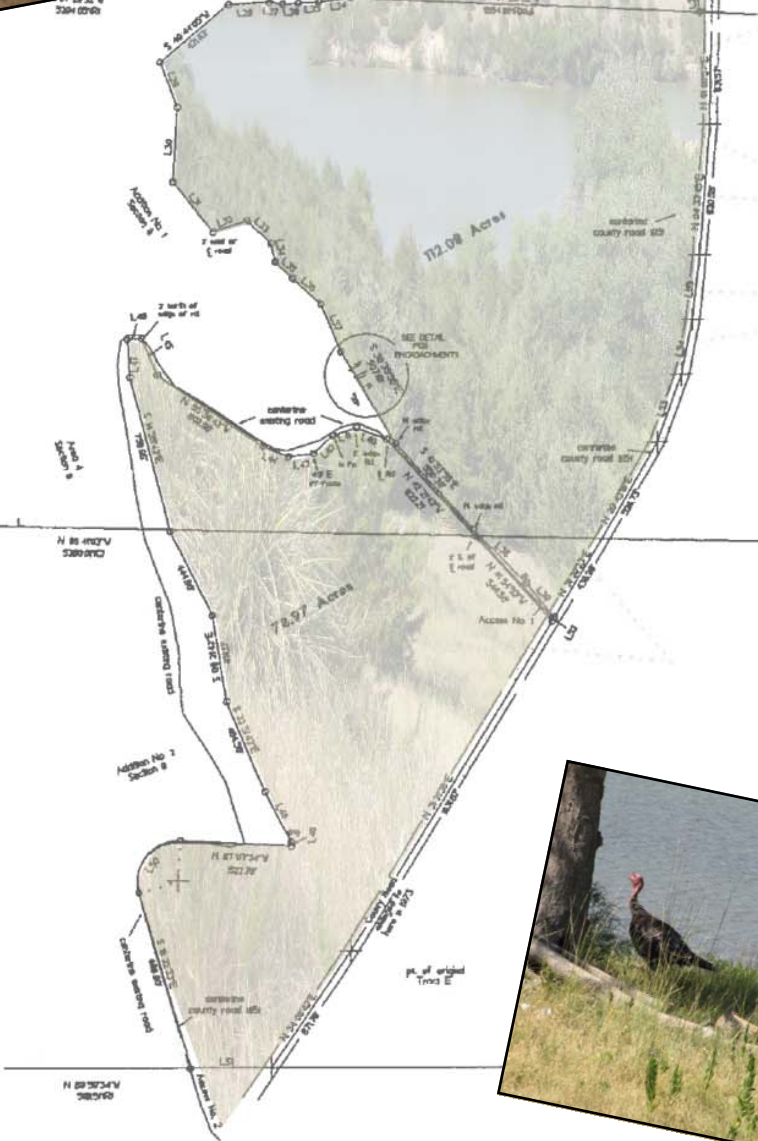
New Survey

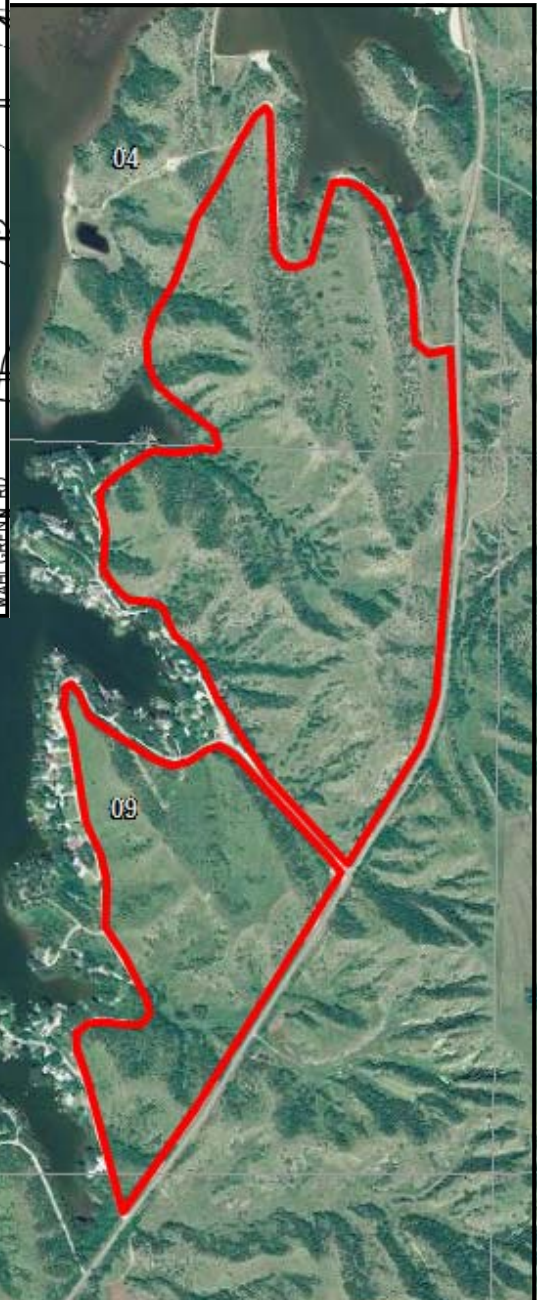
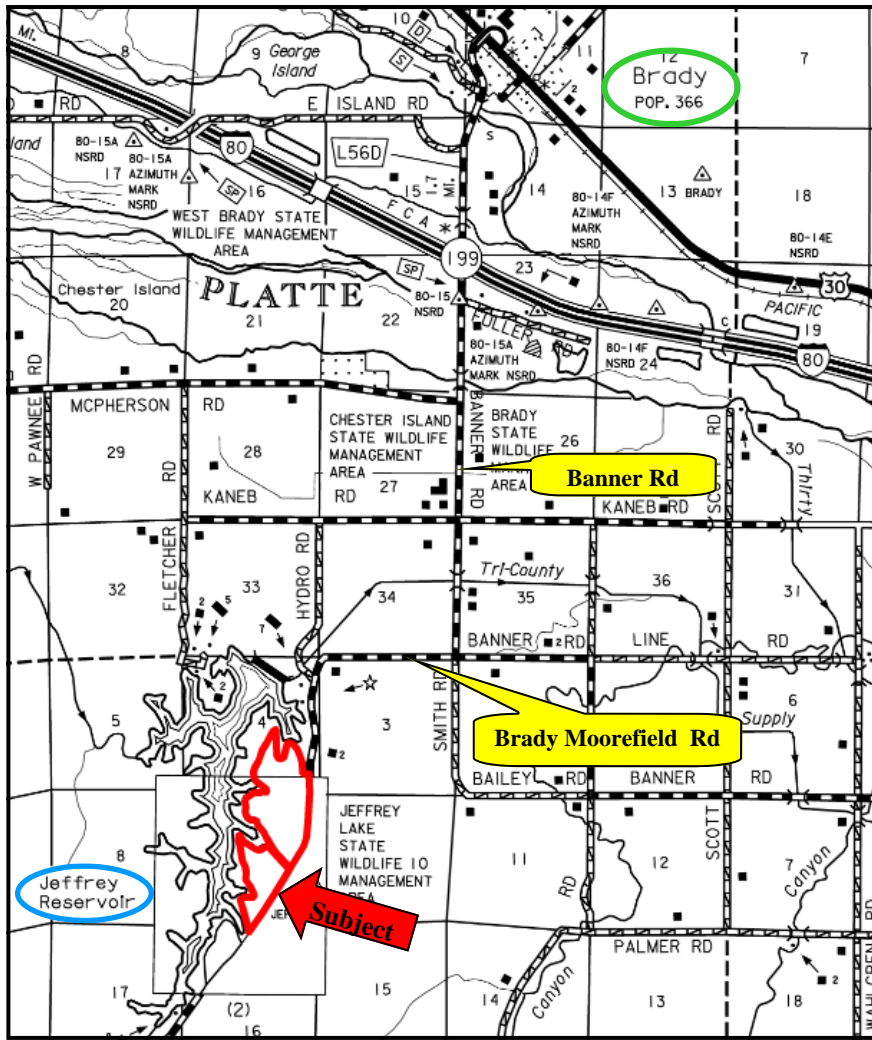
- ⊙ Corner Found
- Corner Not
- 1/2" x 2 1/2" rebar & OPC
- PK Nail in ground
- R Record Return
- 263914' or M Measured Distance

Section 4-11-27
Jeffrey Lake



Section 9-11-27
Jeffrey Lake






AGRI AFFILIATES, INC.
... Providing Farm - Ranch Real Estate Services. ...

All maps provided by Agri Affiliates, Inc. are approximations only, to be used as a general guideline, and not intended as survey accurate.