

LAND AUCTION

ABSOLUTE without RESERVE
THURSDAY, DECEMBER 2, 2021
1:00 p.m. Red Willow Fairgrounds in McCook, NE

555 Acres - Cropland & Rangeland in Hitchcock Co., NE



SELLER

TRIANGLE FARMS, LTD.

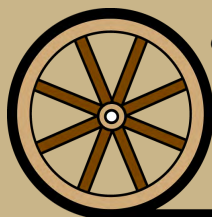
Listing Agent

Brian Reynolds - 308.380.5734

Bruce Dodson, Chase Dodson, Mike Polk, Mike Wilken, Bryan Danburg



Brian Reynolds
Listing Agent
308.380.5734



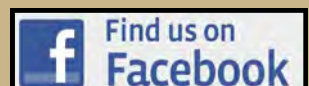
Offered Exclusively By:

AGRI AFFILIATES, INC.

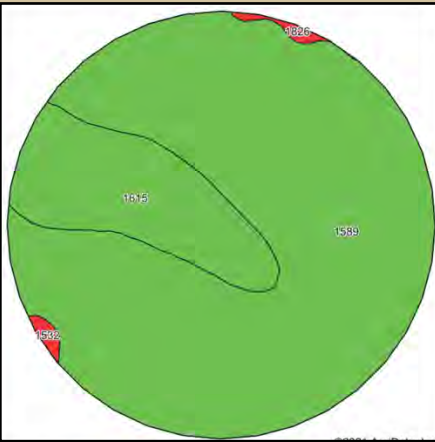
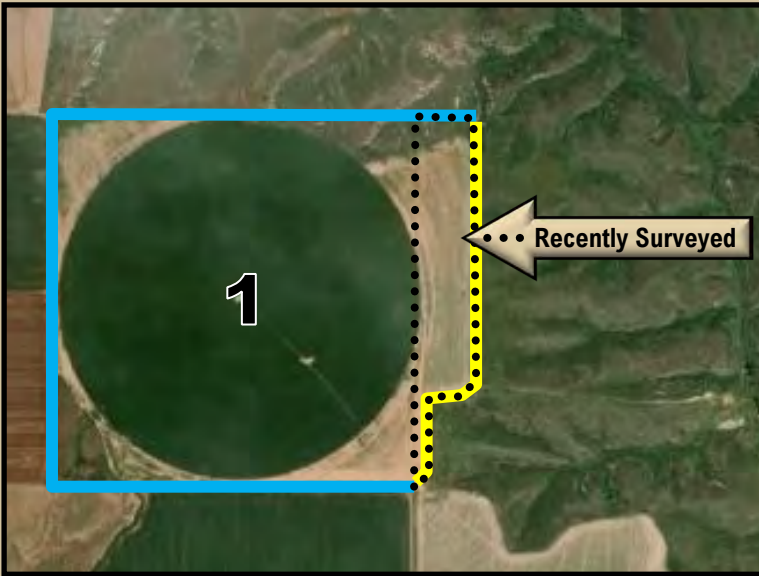
Providing Farm - Ranch Real Estate Services

NORTH PLATTE OFFICE
PO Box 1166 - 401 Halligan Dr.
North Platte, NE 69103
www.agriaffiliates.com
(308) 534.9240

Information contained herein was obtained from sources deemed reliable. We have no reason to doubt the accuracy, but the information is not guaranteed. Prospective Buyers should verify all information. All maps provided by Agri Affiliates, Inc. are approximations only, to be used as a general guideline, and not intended as survey accurate. As with any agricultural land, this property may include noxious weeds. Agri Affiliates, Inc. and all agents are acting as Agent of the Seller.



PARCEL 1 - 179 ACRES



LOCATION: 8 miles northwest of Culbertson in Hitchcock County, NE

LEGAL DESCRIPTION: NE1/4 Section 21-T4N-R32W and a surveyed tract in the NW1/4 of Section 22-T4N-R32W

EST. ACRES & TAXES: Approximately 179 acres - Estimated Real Estate Taxes \$5,232.40 (to be determined by survey) Occupation Taxes: \$1,310.00

CURRENT CROP: 45.76 acres currently planted to wheat. Buyer shall reimburse the tenant for summer fallow expense, along with fertilizer & the cost to establish the growing wheat crop and will assume tenant's wheat Insurance Premium. Total costs are as follows: Summer fallow & wheat establishment \$6,231.60 + 12.98/acre premium (\$593.96) - Insurance Guarantee: 45 bu. APH @70% = 31.5 bu/ac guarantee **TOTAL GUARANTEE AMOUNT: \$10,234.00**

LAND USE: Pivot irrigated cropland, dry cropland & winter range

FSA INFORMATION: 168 Cropland Acres; 134.7 ac. corn base @ 148 ac./bu. PLC yield; 21.9 ac. wheat base @ 57 ac./bu. PLC yield; 10.02 ac. grain sorghum base @ 56 ac./bu. PLC yield; .42 ac. oat base @ 50 bu./ac. PLC yield.

WATER: 131 Certified Irrigated Acres in the Middle Republican Natural Resource District. 50.18" ac. remaining in allocation as of Jan. 2021.

IRRIGATION EQUIPMENT: 7-tower Valley 8000 Pivot, Two 60HP GE Electric motors, Two Western Land Roller pumps, column, bowls. NE Well Reg # G-038204 (pumping depth 275') & #G-038205 (pumping depth 280') Pivot is nozzled 500-525 gal./min. both wells run simultaneously

COMMENTS: Prime pivot irrigated farm with excellent Class II soils. Fenced along surveyed eastern boundary and located just 2-1/2 miles off Hwy. 6

Area Symbol: NE087, Soil Area Version: 19

Code	Soil Description	Acres	Percent of field	Non-Irr Class Legend	Non-Irr Class *c	Irr Class *c	Corn Bu	Corn Irrigated Bu	Soybeans Bu	Soybeans Irrigated Bu	Winter wheat Bu	Winter wheat Irrigated Bu
1589	Blackwood silt loam, 1 to 3 percent slopes	98.65	81.6%		Ile	Ile	38	139			40	
1615	Keith and Blackwood silt loams, 0 to 1 percent slopes	21.04	17.4%		Ilc	Iw	49	154	17	23	20	35
1826	Sulco complex, 9 to 60 percent slopes	0.65	0.5%		Vlle							
1532	Sulco silt loam, 9 to 30 percent slopes	0.57	0.5%		Vlle							
Weighted Average					2.05	1.81	39.5	140.2	3	4	36.1	6.1



PARCEL 2 - 376 ACRES

LOCATION: 8 miles northwest of Culbertson in Hitchcock County, NE

LEGAL DESCRIPTION: W1/2 Section 22, less surveyed tract in W1/2NW1/4; NE1/4NW1/4, NW1/4NE1/4 of Section 27-T4N-R32W

EST. ACRES & TAXES: Approximately 376 acres - Estimated Real Estate Taxes \$4,035.28 (to be determined by survey)

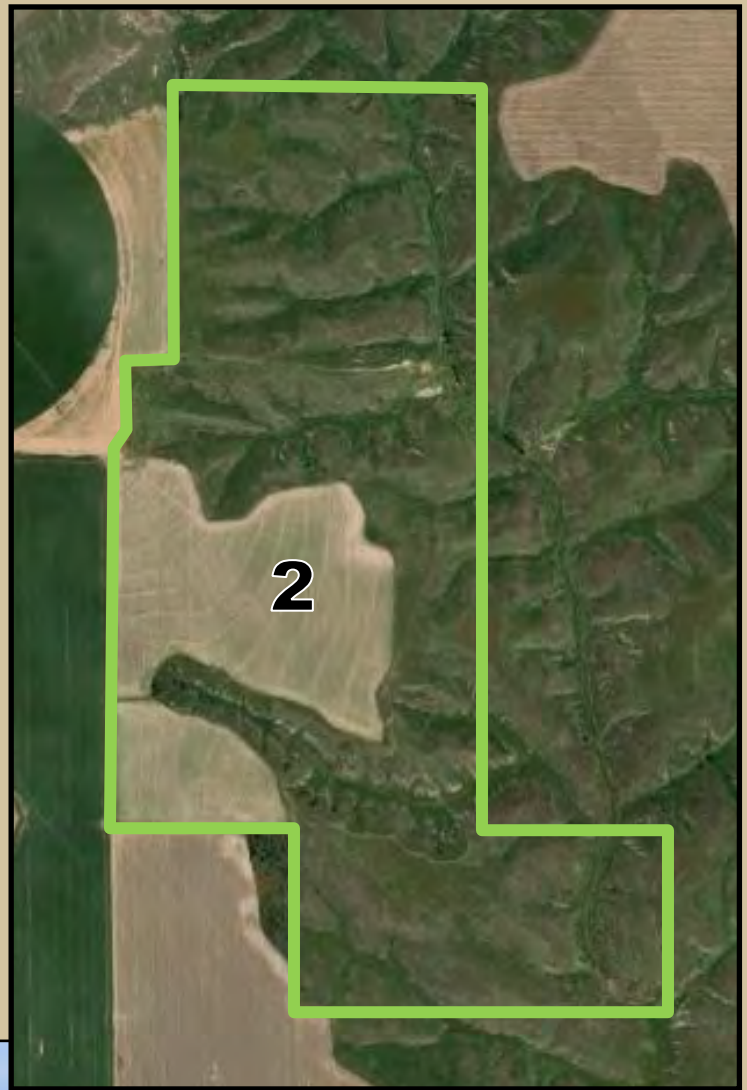
CURRENT CROP: 90.64 acres currently planted to wheat. Buyer shall reimburse the tenant for summer fallow expense, along with fertilizer & the cost to establish the growing wheat crop and will assume tenant's wheat Insurance Premium. Total costs are as follows: Summer fallow & wheat establishment \$12,343.35 + 12.98/acre premium (\$1,176.50) - Insurance Guarantee: 45 bu. APH @ 70% = 31.5 bu/ac guarantee **TOTAL GUARANTEE AMOUNT: \$20,272.00**

LAND USE: Appx. 90 ac. dry cropland & 284 ac. rangeland

FSA INFORMATION: 106.33 Cropland Acres; 28.4 ac. corn base @ 148 bu./ac. PLC yield; 51.1 ac. wheat base @ 57 bu./ac. PLC yield; 23.38 ac. grain sorghum base @ 56 bu./ac. PLC yield; .98 ac. oat base @ 50 bu./ac. PLC yield.

WATER: Windmill & tank with new motor in 2020

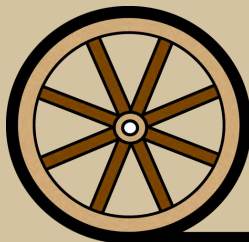
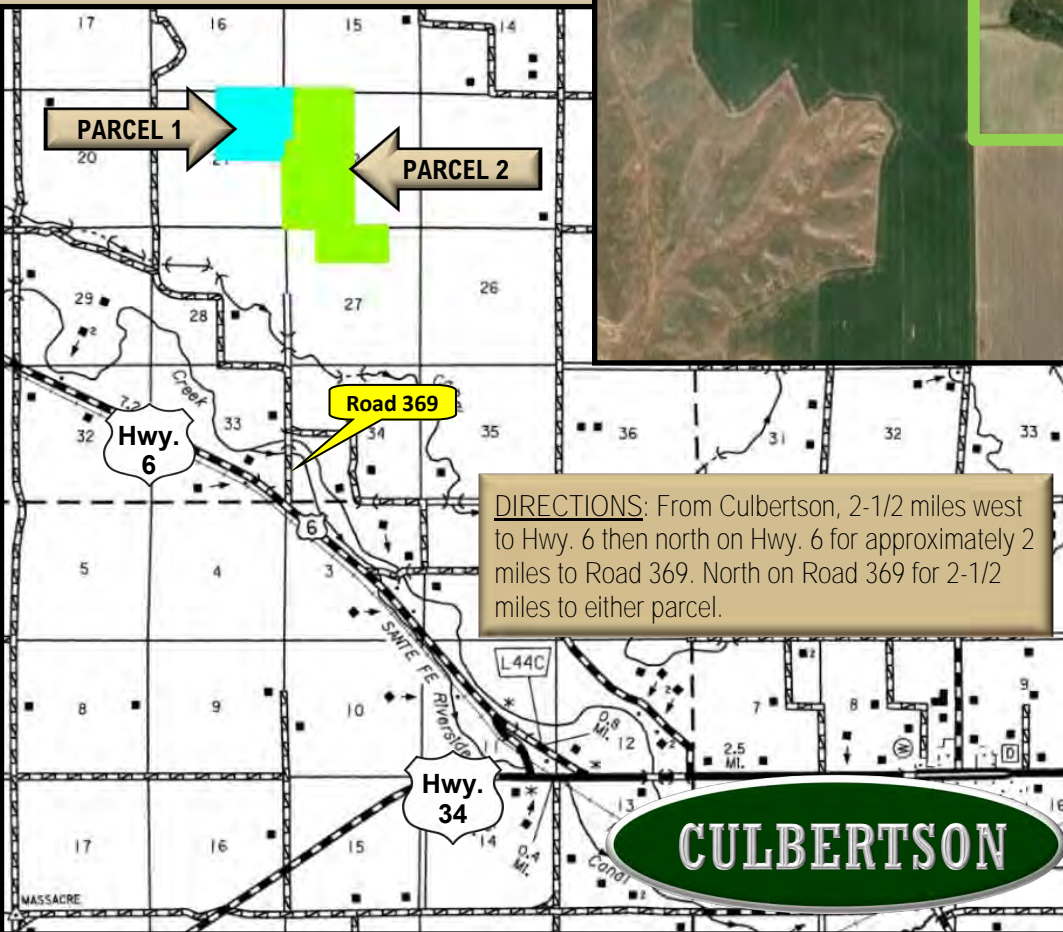
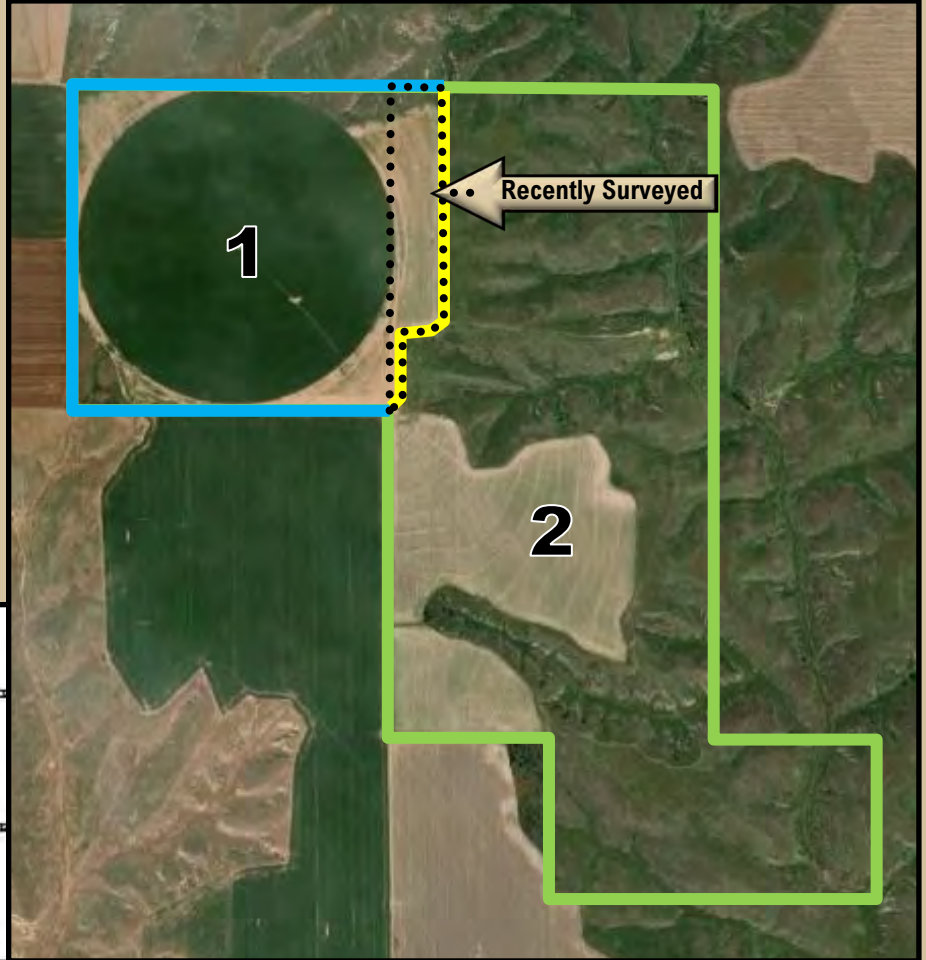
COMMENTS: Nice combination of Class II dryland and hardland pasture. 100% possession of growing wheat crop available with buyout of current tenant interest.



Area Symbol: NE087, Soil Area Version: 20

Code	Soil Description	Acres	Percent of field	Non-Irr Class Legend	Non-Irr Class *c	Irr Class *c	Corn Bu	Corn Irrigated Bu	Winter wheat Bu
1589	Blackwood silt loam, 1 to 3 percent slopes	85.17	94.0%	IIIc	IIIc	IIIc	38	139	40
1532	Sulco silt loam, 9 to 30 percent slopes	2.24	2.5%	VIIc	VIIc				
1825	Sulco complex, 9 to 60 percent slopes	1.96	2.2%	VIIc	VIIc				
1889	Ulysses-Sulco silt loams, 6 to 9 percent slopes, eroded	1.27	1.4%	IVe	IVe	IVe			
Weighted Average					2.26	1.94	35.7	130.6	37.6





Offered Exclusively by-

AGRI AFFILIATES, INC.

Providing Farm - Ranch Real Estate Services

“Big Enough to Serve You; Small Enough to Know You!”